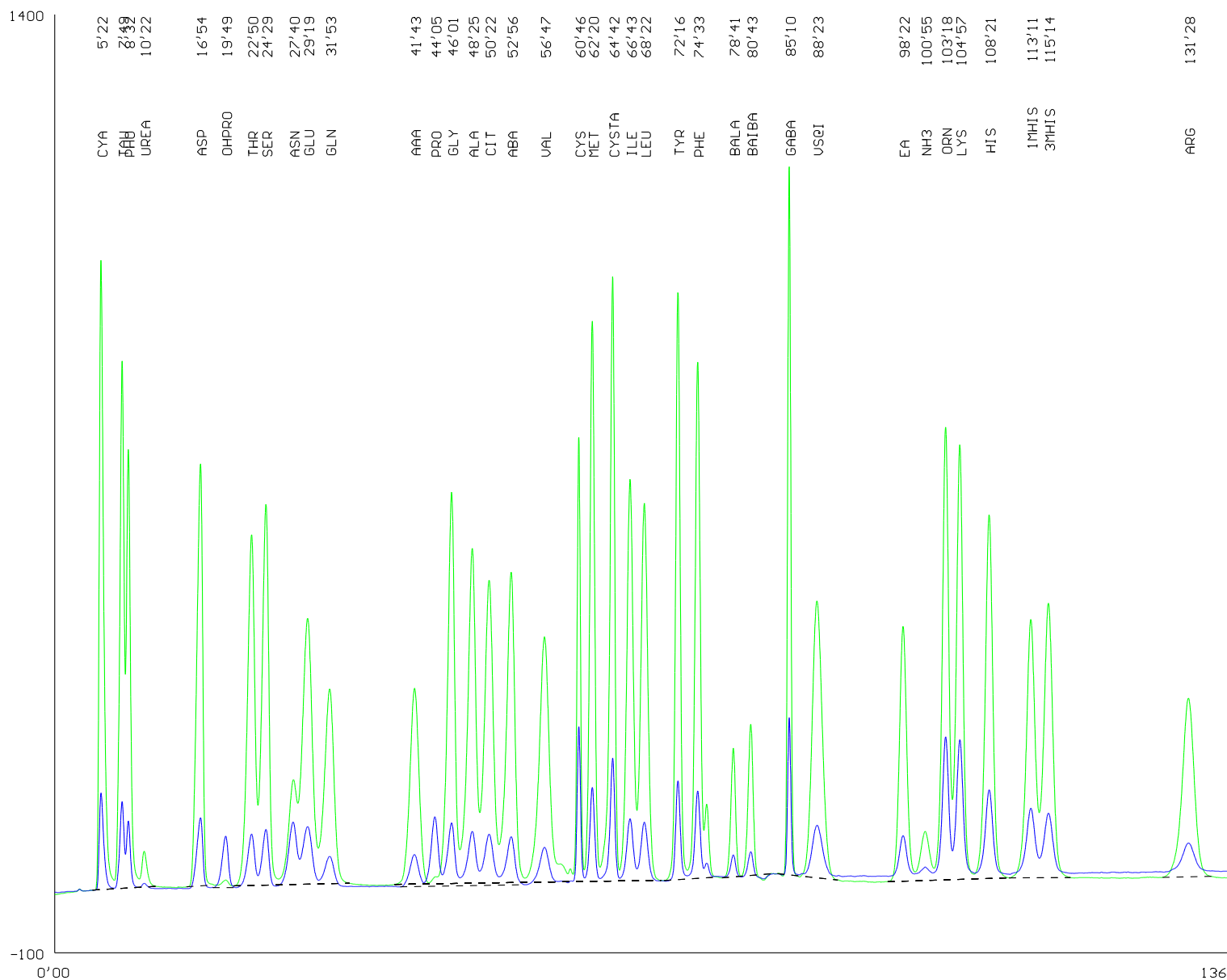


Determination of free amino acids

Standard 25 nmol



Packing of column: OSTION
 Lg FA
 Column height: 20-22 x 0.37cm
 Column temperature: See program

- Buffers:
- 1: pH 2.8 0.18 M Li⁺
 - 2: pH 3.1 0.20 M Li⁺
 - 3: pH 3.35 0.35 M Li⁺
 - 4: pH 4.05 0.33 M Li⁺
 - 5: pH 4.65 1.20 M Li⁺
 - 6: 0.3 M LiOH

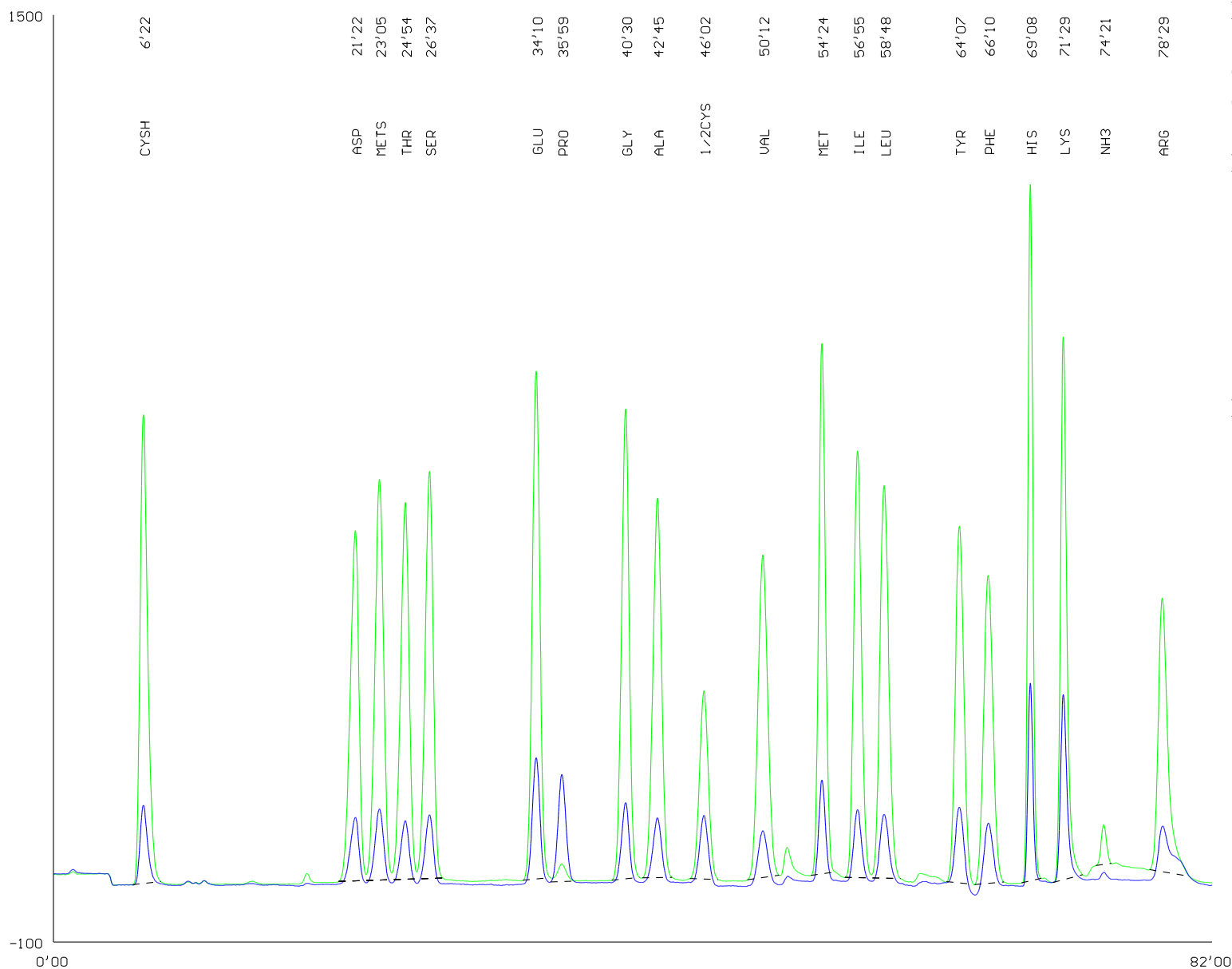
Program:

Time	Temp.	Buffer
0.00	38.00	2
33.00	38.00	3
45.00	70.00	3
50.00	70.00	4
63.00	70.00	5
95.00	74.00	5
120.00	74.00	6
136.00	53.00	5
139.00	74.00	1
144.00	38.00	1
160.00	38.00	1

VS - chlor phenyl alanine

Analysis of hydrolysate

Standard 25 nmol



Packing of column: OSTION
 Lg ANB
 Column height: 35 x 0.37cm
 Column temperature: See program

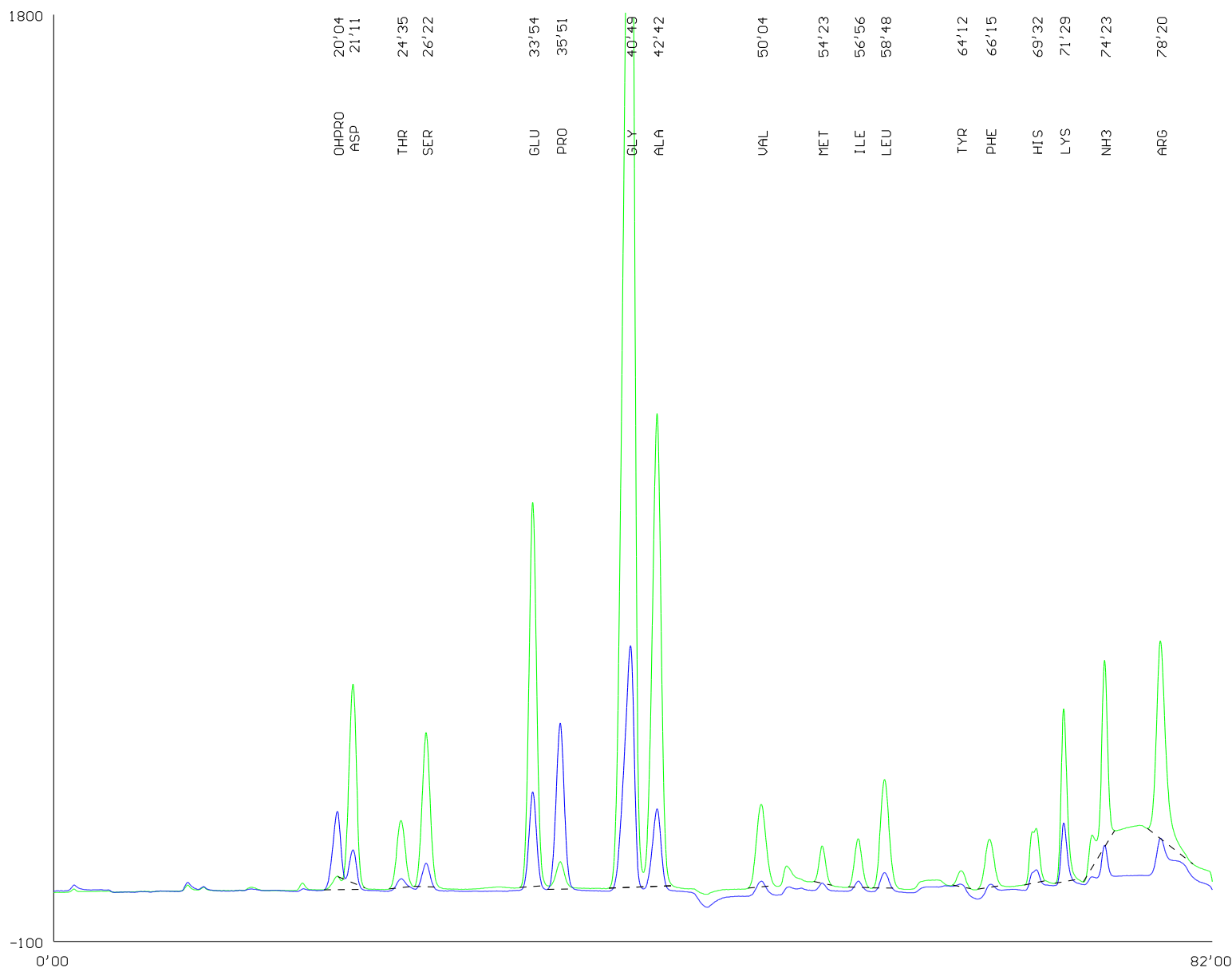
Buffers:
 1: pH 2.7 0.2 M Na⁺
 2: pH 4.25 0.5 M Na⁺
 3: pH 6.9 1.12 M Na⁺
 4:
 5:
 6: 0.2 M NaOH

Program:

Time	Temp.	Buffer
0.00	50.00	1
1.00	50.00	4
29.00	50.00	2
44.00	60.00	3
63.00	74.00	3
66.00	74.00	6
71.00	74.00	1
77.00	60.00	1
82.00	53.00	1
87.00	50.00	1
101.00	50.00	1

Analysis of hydrolysate

Hydrolysate of gelatine



Packing of column: OSTION
 Lg ANB
 Column height: 35 x 0.37cm
 Column temperature: See program

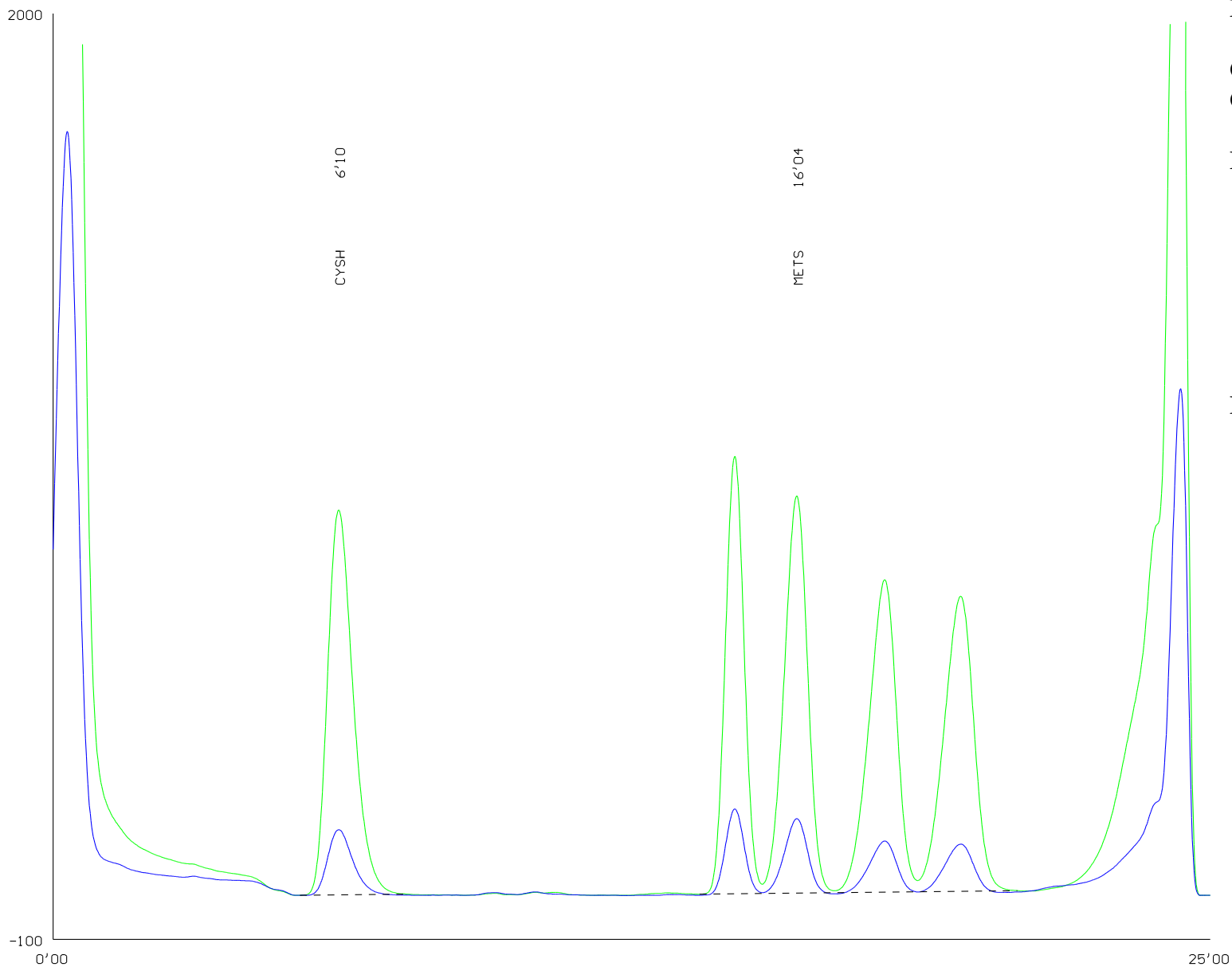
Buffers:
 1: pH 2.7 0.2 M Na⁺
 2: pH 4.25 0.5 M Na⁺
 3: pH 6.9 1.12 M Na⁺
 4:
 5:
 6: 0.2 M NaOH

Program:

Time	Temp.	Buffer
0.00	50.00	1
1.00	50.00	4
29.00	50.00	2
44.00	60.00	3
63.00	74.00	3
66.00	74.00	6
71.00	74.00	1
77.00	60.00	1
82.00	53.00	1
87.00	50.00	1
101.00	50.00	1

Shorten analysis of sulphur amino acids

Standard 25 nmol



Packing of column: OSTION
Lg ANB
Column height: 35 x 0.37 cm
Column temperature: See program

Buffers:
1: pH 2.7 0.2 M Na⁺
2:
3:
4:
5:
6: 0.2 M NaOH

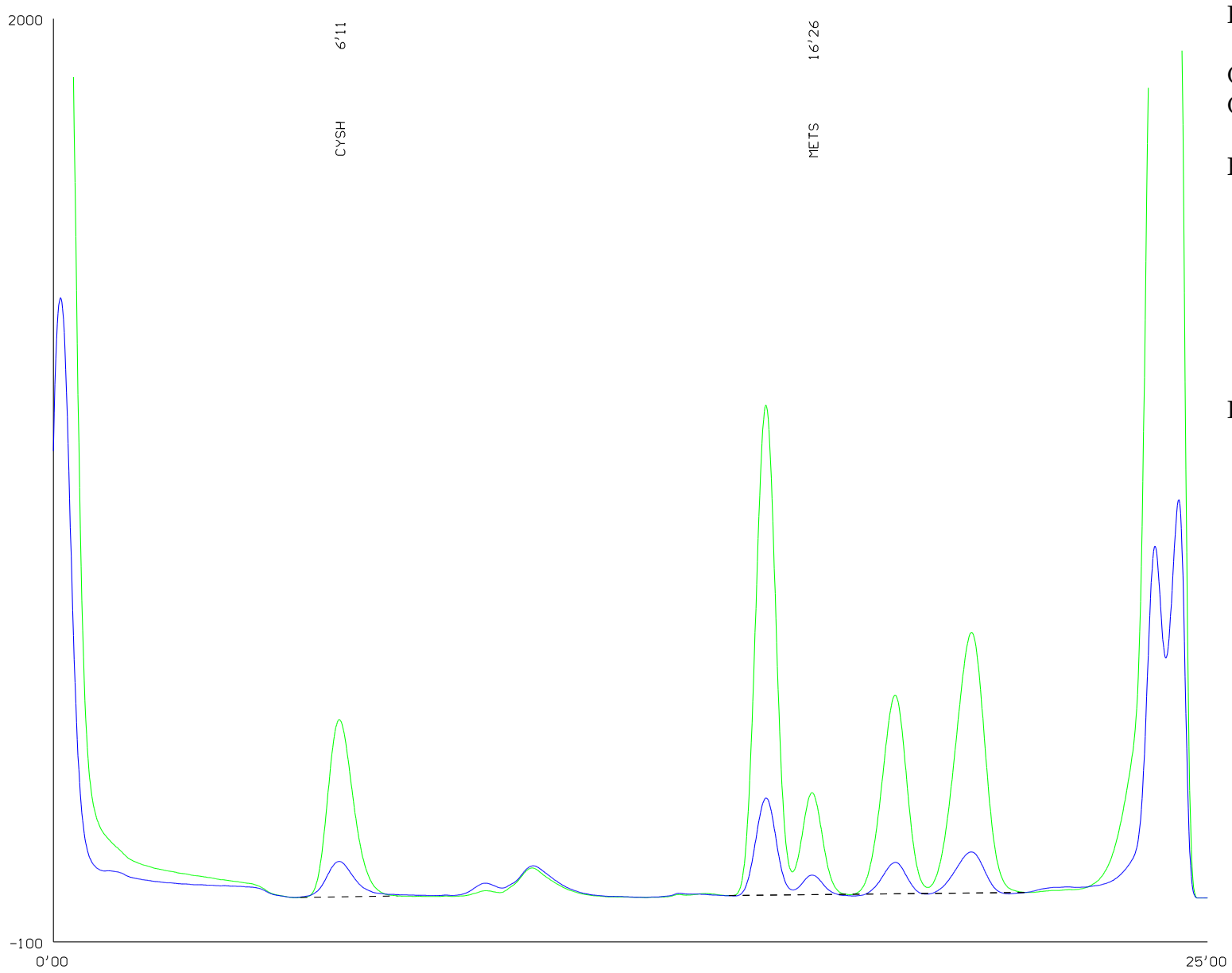
Program:

Time	Temp.	Buffer
0.00	60.00	1
3.00	60.00	6
8.00	60.00	1
25.00	60.00	1

Shorten analysis of sulphur amino acids



Oxidative hydrolyzate of feed mixture



Packing of column: OSTION
Lg ANB
Column height: 35 x 0.37 cm
Column temperature: See program

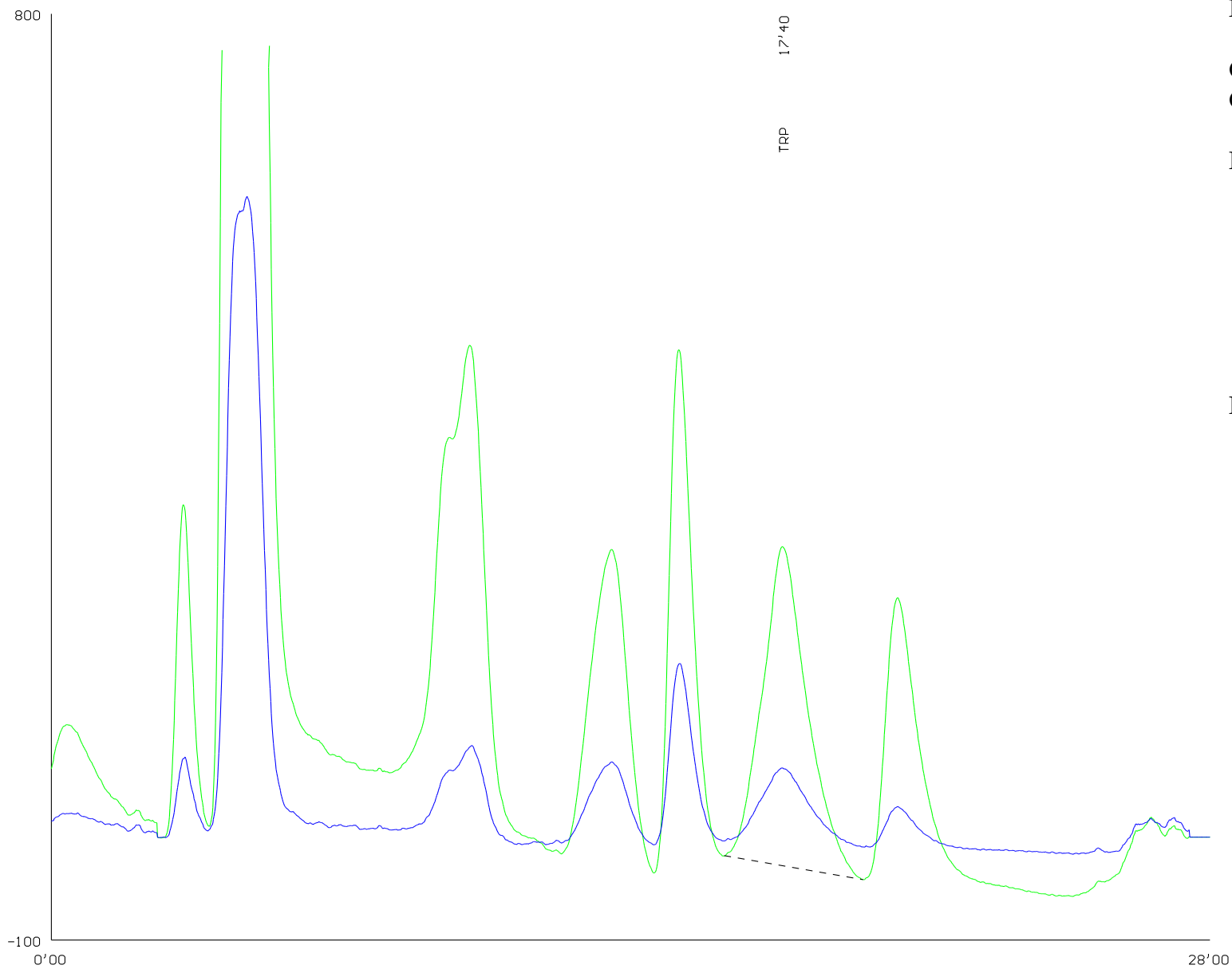
Buffers:
1: pH 2.7 0.2 M Na⁺
2:
3:
4:
5:
6: 0.2 M NaOH

Program:

Time	Temp.	Buffer
0.00	60.00	1
3.00	60.00	6
8.00	60.00	1
25.00	60.00	1

Accelerated determination of TRP using of shorten column

Standard 25 nmol



Packing of column: OSTION
Lg ANB
Column height: 10 x 0.37 cm
Column temperature: See program

Buffers:

- 1: pH 2.7 0.2 M Na⁺
- 2:
- 3: pH 6.9 1.12 M Na⁺
- 4:
- 5: 0.4 M Na⁺
- 6: 0.2 M NaOH

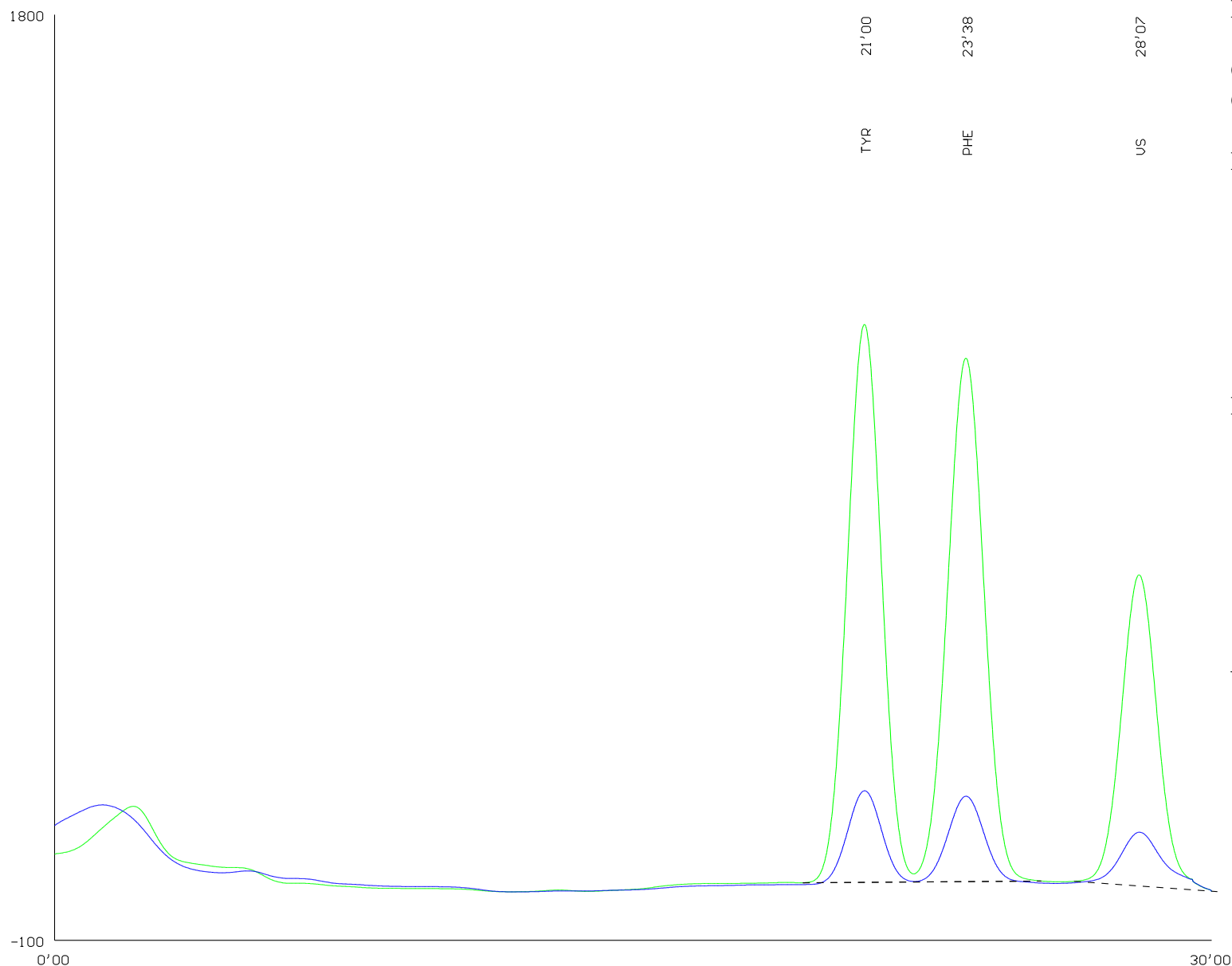
Program:

Time	Temp.	Buffer
0.00	50.00	3
2.30	52.00	3
13.00	52.00	6
18.00	52.00	1
24.00	52.00	5
28.00	52.00	5

Shorten determination of tyr, phe using of inner standard



Standard 25 nmol



Packing of column: OSTION
Lg FA
Column height: 20-22 x 0.37 cm
Column temperature: See program

Buffers:
1: pH 2.8 0.18 M Li⁺
2:
3: pH 3.35 0.35 M Li⁺
4: pH 4.05 0.33 M Li⁺
5:
6: 0.3 M LiOH

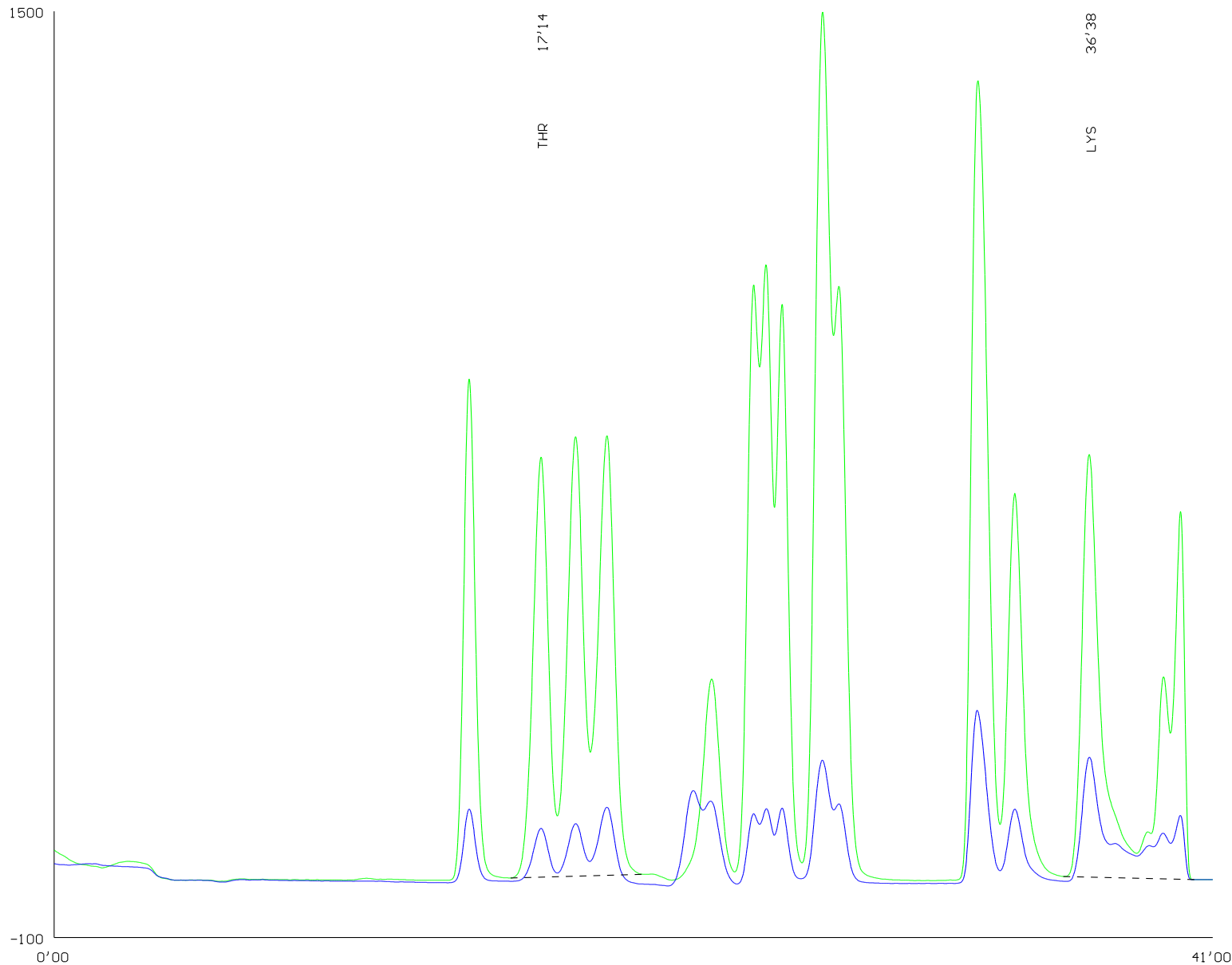
Program:

Time	Temp.	Buffer
0.00	60.00	4
12.00	70.00	4
13.00	70.00	6
18.00	70.00	1
21.00	60.00	3
30.00	60.00	3

VS - chlor phenyl alanine

Shorten determination of thr, lys

Standard 25 nmol



Packing of column: OSTION
Lg ANB
Column height: 35 x 0.37cm
Column temperature: See program

Buffers:

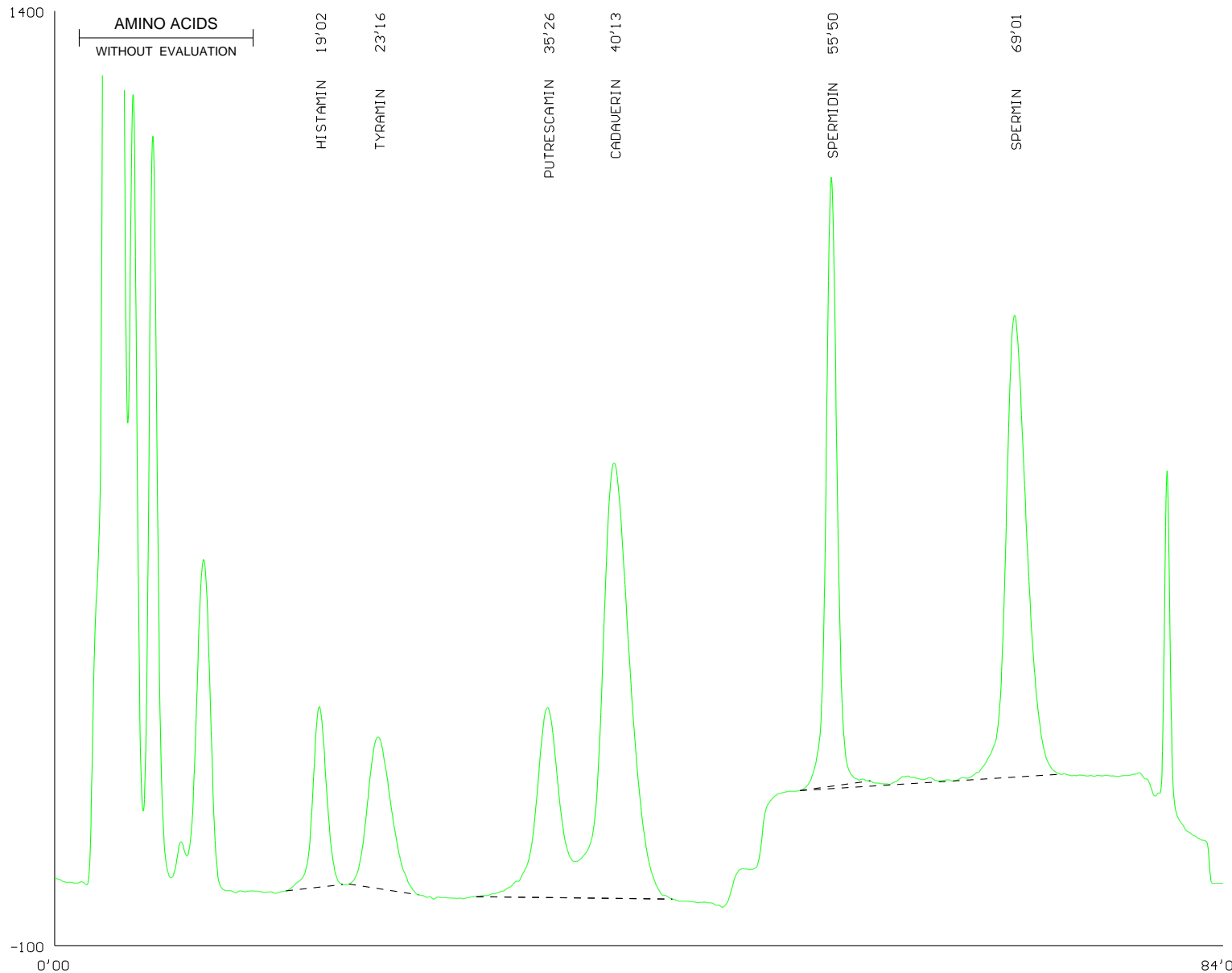
- 1: pH 2.7 0.2 M Na⁺
- 2: pH 4.25 0.5 M Na⁺
- 3: pH 6.9 1.12 M Na⁺
- 4: pH 3.0
- 5:
- 6: 0.2 M NaOH

Program:

Time	Temp.	Buffer
0.00	53.00	4
4.00	60.00	2
8.00	60.00	3
20.00	68.00	3
22.00	68.00	6
24.00	68.00	4
36.00	60.00	4
41.00	53.00	4

Determination of biogenic amines

Standard 25 nmol



Packing of column: OSTION
Lg ANB
Column height: 5.5-7 x 0.37 cm
Column temperature: See program

Buffers:
1: See table
2: See table
3:
4:
5:
6: 0.2 M NaOH

Program:

Time	Temp.	Buffer
0.00	60.00	1
48.00	60.00	2
74.00	60.00	6
79.00	60.00	1
94.00	60.00	1

Table:

Buffer	1	2
Citric acid	1,05g	14,0g
Sodium citrate	21,0g	-
Sodium chloride	5,0 g	-
Potassium chloride	-	171,5 g
Potassium bromide	41,65g	-
Potassium hydroxide	-	10,0ml
Isopropanol	250,0ml	-
Final volume	1000 ml	1000 ml